

St. Louis Area Dressage Society

GMO



GROUP
MEMBER
ORGANIZATION

HOOFFPRINTS

St. Louis Area Dressage Society



April 2007

*SLADS is a USDJ Charter Group Member organization.
This organization's members are automatically USDJ Group Members.*

President's Message

Members,

If you haven't checked out our new website, get online! Sandi Lewis has done an excellent job of giving our site a face lift. There are still a few tweaks that need to be updated, but it's lookin' good. Here are a few improvements we are making to the new website:

1. Current Standings will be updated after each SLADS show so you can see your points.
2. On the home page, we will post the monthly General Membership Meeting agenda so you can read ahead of time what we will be discussing at our meetings. If you have some input, show up or email me your comments to share at the meeting.
3. Pictures, Picture, Pictures! We want to showcase our members and their horses. Check out the Photo Album page.
4. Sandi is also working on gathering a brief history of our club and how it got started which will be posted soon.
5. Please email me any comments, suggestions, or changes you'd like made to the website and I can share them with Sandi.

May 12th, SLADS will be hosting a schooling show at Buder Park. The entry form is in this newsletter. There are no stalls at the park, so be prepared to tie up to your trailer for the day. We are very excited about using the park. The board brain stormed several options on where we could host schooling shows this year since Bridlespur is now gone.

Kim Perry is doing an amazing job as VP and Sponsorship Chair. She has landed a \$5000 sponsor! Can you believe it?! This is very exciting and I know she will continue to gain support from St. Louis based businesses. We are also working on getting local publicity from news channels and newspapers this year. We want to showcase SLADS and educate the St. Louis community about our sport. We are hoping to get some news coverage at Regionals.

Lastly, you must read the new and improved volunteer rewards program SLADS will be offering this year (in this issue). It's fabulous and full of great opportunities for our members and trainers.

On a personal note, I would like you to know that I am going through a divorce. It is very quick and painless, but you will see my maiden name from now on. I thought it would be best if you heard it "straight from the horses mouth." Ha ha.

I'll see you in the ring!

Colleen Murphy, SLADS President

In This Issue

- News from USEF
- New Volunteer Program Information
- 2007 Membership Form
- SLADS May Schooling Entry form

2007 Officers, Board Members and Chairpersons

President

Colleen Murphy 636-667-9424
colleen@slads.org

Vice-President

Kim Perry
kim@slads.org

Membership Chairperson

Dawn Fee-White 636-376-4585
HorseRiderMom@sbcglobal.net

Treasurer

Ann Benson
benzonac@slu.edu
573-764-4863

Secretary

Paula Sewell
paula@slads.org

Newsletter Editor

Michele Inman
Michele@slads.org

Board Members At Large

Gail Pfleger gail@slads.org
Geri Muldrow gerri@slads.org
Michele Inman Michele@slads.org

Webmaster

Sandra Lewis
cslewis@hughes.net

Education Co-chairperson

Michele Inman Michele@slads.org
Ann Murphy annemur@slads.org

Sponsorship Chairperson

Kim Perry
kim@slads.org

Awards Chairperson

Jessie Fee
jessiefee@sbcglobal.net

Calendar Of Events

April

14
SLADS Symposium I at Lake St. Louis Equestrian Center. See flyer in newsletter and at www.slads.org for details. FREE to SLADS members!

21
Spring Schooling Dressage Show at Southern Illinois Equestrian Center, Marion IL. Contact cld_south@yahoo.com or 618-684-4185.

22
Clinic with Lynda Weese, USDF Bronze & Silver Medalist. Southern Illinois Equestrian Center. Contact cld_south@yahoo.com or 618-684-4185.

28-29
Wolfgang Scherzer Dressage Clinic at Hamilton Stables, Wentzville, MO. Riders and auditors welcome. Limited stabling. www.hamiltonstables.net or contact Julie Snitzer 314-704-7441 or Julia.snitzer@us.pwc.com

May

5
Schooling show at Prairie Oaks Eq. Center in Glen Carbon, IL. All judges are rated. Contact Judy Tippett at 618-570-9369 or jtpp4@hotmail.com.

5-6
Dressage at Longview I & II. Check USDF Region 4 competition calendar for contact info. This show is held by KCDS and SLADS recognized.

12
SLADS Schooling Show at Buder Park. Managed by Gerri Muldrow and Gail Pflieger. Entry form in this newsletter.

19
Brier Bank Farm schooling show in Marine, IL. Contact Gay Anderson at 618-887-4439 or Brierbankfarm@juno.com. Prize list at brierbankfarm.com

26-27
Wolfgang Scherzer Dressage Clinic at Hamilton Stables, Wentzville, MO. Riders and auditors welcome. Limited stabling. www.hamiltonstables.net or contact Julie Snitzer 314-704-7441 or Julia.snitzer@us.pwc.com

June

1-3
SLADS Summer Festival I & II. Prize list at www.slads.org

16-17
Clinic at Meadowbrook Equestrian Center with Stacey Schettkoe. \$175 per lesson. Contact Marnie at mbec@centurytel.net for details.

23-24
Wolfgang Scherzer Dressage Clinic at Hamilton Stables, Wentzville, MO. Riders and auditors welcome. Limited stabling. www.hamiltonstables.net or contact Julie Snitzer 314-704-7441 or Julia.snitzer@us.pwc.com

June

8-10
Thomas Ritter Clinic at Shepard Hills Farm in Grant Fork, IL. Contact Sherry at srodenmeyer@whisperhome.com or 618-792-3365.

20-24
CDCTA Adult Dressage Camp with USDF certified instructors Sarah Martin, Gina Krueger, and FEI trainer Wick (Elizabeth) Hotchkiss @ William Woods University. Contact Holly Rice, grey-horsecomm@aol.com or 573-999-7337 for more information.

July

7-8
Summer Days at Longview I & II. Check USDF Region 4 competition calendar for contact info. This show is held by KCDS and SLADS recognized.

28-29
Wolfgang Scherzer Dressage Clinic at Hamilton Stables, Wentzville, MO. Riders and auditors welcome. Limited stabling. www.hamiltonstables.net or contact Julie Snitzer 314-704-7441 or Julia.snitzer@us.pwc.com

August

11
Brier Bank Farm schooling show in Marine, IL. Contact Gay Anderson at 618-887-4439 or Brierbankfarm@juno.com. Prize list at brierbankfarm.com

September

1-2
Wolfgang Scherzer Dressage Clinic at Hamilton Stables, Wentzville, MO. Riders and auditors welcome. Limited stabling. www.hamiltonstables.net or contact Julie Snitzer 314-704-7441 or Julia.snitzer@us.pwc.com

15
Southern Illinois Dressage Classic, Marion IL. Judge Lisa Holderle "L" graduate. Intro-Second Level. Call 618-684-4185 or cld_south@yahoo.com

October

6-7
Wolfgang Scherzer Dressage Clinic at Hamilton Stables, Wentzville, MO. Riders and auditors welcome. Limited stabling. www.hamiltonstables.net or contact Julie Snitzer 314-704-7441 or Julia.snitzer@us.pwc.com

12-14
Region 4 Championships at the National Equestrian Center. More info later.

November

3
Tentative - SLADS Schooling Show at Buder Park. Managed by Gerri Muldrow and Gail Pflieger. Details coming soon!

10-11
Wolfgang Scherzer Dressage Clinic at Hamilton Stables, Wentzville, MO. Riders and auditors welcome. Limited stabling. www.hamiltonstables.net or contact Julie Snitzer 314-704-7441 or Julia.snitzer@us.pwc.com

To post your event to the SLADS newsletter email:
fafetza@hotmail.com

St. Louis Area Dressage Society
Spring Schooling Show
Saturday May 12, 2007
MHSA & SLADS Recognized

Place: Lower Buder Park, Valley Park, MO (just North East of I-44 & 141)
Judge: TBD

Management Team: Gerri Muldrow & Gail Pflieger
573-764-5070 636-629-1353
Gerri@SLADS.org Gail@SLADS.org

Mail Entries to: Gail Pflieger, 3111 Iron Hill Road, Union, MO 63084

Opening Date: April 16, 2007 **Closing Date:** May 2, 2007

Fees: **Classes** \$18.00 (limit 3 - school horses w/ multiple riders excepted)
SLADS non-member fee: \$5.00
Jump Out: \$10.00

Awards: First place prize & ribbons 1st - 6th.

Concessions: Will be available on the grounds between 9am and 2pm. Plan accordingly.

Proof of **Negative Coggins** is required (*please have your original report available for inspection... this is a MO state law*).

Ride times available by May 8th, check the SLADS web site (SLADS.org) or enclose a SASE. *No schooling is allowed in the competition ring(s)*. Footing is grass. There is plenty of schooling room. USEF/USEA rules will govern all classes. Informal attire - boots, breeches, & hard hats are required when mounted.

Cancellations before the closing date will receive 75% of class fees less the \$25.00 office fee and jump-out fees. Cancellations after closing date (with an *original* vet/drs certificate) will receive 50% of class fees less the \$25.00 office fee and jump-out fees. \$25 fee for returned checks. Dogs must be leashed at all times and attached to a person or a stationary object.

Classes

1	Lead Line	8	Eventing Test of Choice (BN, N, T or P - Specify tests)
2	Intro Test A	9	First Level Test 1
3	Intro Test B	10	First Level Test 2
4	Training Test 1	11	First Level Test 3
5	Training Test 2	12	First Level Test 4
6	Training Test 3	13	Second Level & Above* – Test of Choice (Specify tests)
7	Training Test 4		

***Notes:** *New 2007 Tests for USEF & USDF. Current USEA tests.* Class 1 participants may not enter any other class. **Classes 7 & 12** may be entered multiple times. **Helmet with harness** required for Eventing Test classes. **Waiting List** will be established for over-subscription.

Send your entries in early (one ring limit).

Come early and help us set-up or stay late for clean-up.

Show will take place rain or shine.

MANAGEMENT RESERVES THE RIGHT TO CANCEL/COMBINE CLASSES IF NECESSARY, DEPENDING UPON ENTRIES.

COMPETITORS WILL BE NOTIFIED.

SLADS Spring Schooling Show

Saturday May 12, 2007

(only one per horse/rider entry please)

If your entry is completed correctly... a special treat will await you!

Rider: _____ Age: _____

Address: _____

Phone: Day _____ Night/Cell _____ SLADS Member: Y ___ N ___

Email: _____

Horse: _____

Owner: _____

Classes: _____

☺ Remember we will be using the new 2007 tests! ☺

Class Fees: _____

SLADS Non Member fee (\$5): _____

Jump Out: _____

Total fees enclosed: _____

Yes! I will be there @ 7:30am to set up the arena _____ I'll help clean-up after the show _____

Sign below, make checks payable to SLADS & mail with proof of Negative Coggins to:

Gail Pflieger, 3111 Iron Hill Road, Union, MO 63084

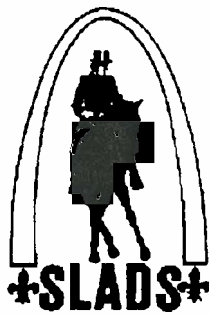
RELEASE: I enclose herewith a total of \$ _____ for the aforementioned entry, which is made at my own risk and subject to the conditions of the competition sponsor and regulations of the USEF & USEA. I understand that this is a high risk sport and I am participating at my own risk. I hereby assume this risk and further do hereby release and hold harmless the Organizer (SLADS), the organizing committee, judges and officials, and the owners of any property on which the event is to be held, from all liability of negligence resulting from accident, damage, injury or illness to myself and to my property including the horse or horses with which I will compete at this competition. See Section A. Chapter 537, RSMo for details on Missouri's Equine Liability Law.

WARNING

Under Missouri law, an equine professional is not liable for an injury to or the death of a participant in equine activities resulting from the inherent risks of equine activities pursuant to the Revised Statutes of Missouri.

Signature: _____ Date: _____

(Parent or guardian must sign if competitor is under 18)



Volunteer Rewards Program

Introducing the new and improved rewards program. This program was developed to earn various level of rewards based on your volunteer hours and is in addition to the end of year awards. Your volunteer hours cumulated will fulfill your requirement for the end of year awards and qualify you for the following rewards. So the more you do, the more you get.

All approved volunteer hours will be cumulated on an annual basis – Jan. 1 through Dec. 31 of each year. Your hours worked will posted on our web site so you can monitor them. If there are discrepancies contact the volunteer coordinator.

Recognized Show Hours

½ day - \$10 gift certificate, SLADS apparel and a lunch ticket

Full day - \$20 gift certificate, SLADS apparel and a lunch ticket

In addition to the above rewards, for additional hours you will receive:

2 full days – Free lesson with a SLADS member/trainer

Other hours (symposiums, schooling shows, etc.)

4 hours – Lunch (when available)

8 hours – SLADS apparel and lunch (when available)

16 hours – Entry into the end of year drawing for a free lesson with a SLADS member/trainer

Year End Total Hours Awards

For every 24 hours (of which 8 hours must have been worked at a recognized show or trainer hours donated lessons) you will earn one entry into the end of year drawing for an entry fee for a local Clinic of your choice (up to a \$150 value, fee will be paid directly to the clinic). Two prizes will be drawn at the banquet.

March Meeting Minutes

The meeting was called to order at approximately 6:30 p.m. at St. Louis Equestrian Center.

Membership Report: Dawn Fee White reported that we currently have 85 members in our group. The membership is anticipated to grow, since many of the 85 are new members and several old members haven't renewed yet for the 2007 year. The St. Louis University Equestrian Team is also growing, with 45 team members so far.

Prizes: Dawn Fee White brought catalogs and several examples of prizes for this year's show season, ranging from tote bags and monogrammed towels to a crystal arch engraved with our SLADS horse. Final decisions will be made at the April meeting.

Sponsorships and grants: Kim Perry reported that SSM Healthcare/St. Joseph's Hospitals has agreed to be a platinum sponsor (\$5,000.00) for the regional championship. Ann Benson reported that SLADS has been awarded a \$500.00 grant from USDF to continue offering our educational symposiums.

Schooling Shows: SLADS will be hosting two schooling shows again this year. Since Bridlespur has moved from the area, alternative locations of Route 66 State Park (I-44 and Lewis Road) and Lower Budder Park (I-44 and 141) were presented as options. Gerri Muldrow and Gail Pheger will manage the shows.

Volunteer Rewards: It was been suggested that volunteers be offered free lessons with area trainers as an incentive for people with more than 8 hours of volunteer time. Board members will check with area trainers to determine if they would be willing to donate lesson time and to further hone volunteer hour eligibility criteria.

Lead line classes: It was suggested that lead line classes be offered at both shows for children ages 10 and under to encourage youth participation in dressage and to increase spectator and competitor party attendance on Saturday night. Follow up will occur with Sandy Donovan, our show manager, for scheduling and registration issues and Kim Perry will look for a lead line class sponsor.

Medics: Collen will contact the fire station located near the NEC to recruit EMT's or paramedics for both shows.

The meeting was adjourned at approximately 8:30.

Respectfully Submitted,
Paula Sewell, Secretary

April Meeting Minutes

The meeting was called to order at 6:30 p.m. at St. Louis Equestrian Center.

Ride on the Side: A "ride on the side" educational opportunity will be available at the show. A judge will critique competitors for spectators while they ride in the competition. This will occur upstairs in the club room at the NEC and is free to competitors and/or SLADS members. A fee will be charged for non-members to participate. The amount will be determined at a later date.

Lead line class: Our sponsor has acquired ribbons and trophies for every entrant in the lead line class. Competitors in this class will have a separate entry form, and board members will discuss waiving stabling fees for lead line class horses with the NEC management.

EMTS: Kim Perry announced that she has lined up one for both the October and June show. Colleen will also contact the neighboring fire department for back up.

Website: The new website is up and running! Several suggestions were made to improve it, including the ability to turn off the music or have a "play music" button to turn it on or off. There has been some difficulty getting on the e-mail link to contact us regarding the "for sale" page". We will also request the ability to put pictures on the "for sale" page. The price to advertise on our website for non-members was established at \$30.00 per quarter. Members can advertise free, but will be asked to update their ad quarterly.

Volunteer Rewards Program: a handout was provided outlining the Volunteer Rewards Program. Rewards for 4 and 8 hours of volunteering at recognized shows include gift certificates, SLADS apparel and a lunch tickets. With 16 hours of volunteering the reward is a free local clinic with a SLADS member/trainer, up to \$150.00. Reward for other volunteer hours (symposiums, schooling shows, etc.) include lunch, when available, for 4 hours of volunteering, SLADS apparel and lunch for 8 hours, and with 16 hours, Entry into the end of year drawing for a free lesson with a SLADS member/trainer. So far, five trainers have agreed to give free lessons. Year end total hours awards – every 24 hours (of which 8 must have been worked at a recognized show) earns an entry into the end of year drawing for a local clinic of your choice (up to a \$150.00 value) Two prizes will be awarded.

Gail mentioned that part of the reason people don't want to volunteer is because of all the past inaccuracies with year end awards. This problem is being addressed by listing current standings on the website after each show, with current horse/rider nominations and their scores. The website will also include drop down pages with requirements for awards including the volunteer hour requirements.

The meeting was adjourned at 8:45 p.m.

Respectfully Submitted,
Paula Sewell, Secretary

News from USEF

Steffen Peters, Courtney King and Leslie Morse Qualify for U.S. Team to Compete at Rolex FEI World Cup Dressage Finals in Las Vegas

Burbank, California—Steffen Peters, of San Diego, CA, was the odds-on favorite going into Sunday's freestyle class, and he did not disappoint. Riding Laurelyn Browning's Floriano, Peters put in a beautiful and flowing freestyle ride. The pair bested second-place Courtney King by close to three percentage points to win the Freestyle Championships and U.S. League Finals. Reacting to his victory, and his spot on the U.S. team that will compete next month at the Rolex FEI World Cup Dressage Finals in Las Vegas, Peters responded, "It is very, very special. It is an honor to represent the United States."

The 17-year-old gelding looked strong throughout the test, though Peters admitted to riding a bit on the careful side. "This was not a day to take too many risks," he said. Peters continued to say that he hopes to pull out a few more eights in Las Vegas taking those risks in the extensions and piaffes. He laughed about the mistakes in his two tempis, and said that up until the day's competition, he and Floriano had completed six mistake-free tests in a row. "It just goes to show we are human, and they are horses."

"Shell shocked," was the phrase Courtney King, of Sherman, CT, used to describe the excitement of her second-place finish. Much of her freestyle, set to music from *The Wizard of Oz*, was perhaps a premonition of dreams-come-true. "Our goal was just to make it to the League Finals," she said. Now the horse-and-rider pair will be going on to the World Cup.

King's mount, Idocus, owned by Christine McCarthy, is also 17 years old. Responding to the age questions, King said she will never push Idocus a day beyond the time when he is happy and into his work. "Every day [with an older horse] is emotional, and every show is a blessing. I am really thrilled."

Adding to the day's emotion is the fact that King clinics and trains with Peters whenever possible. When asked about having student and teacher in the same competition, Peters commented that it is just as rewarding to have a student garner a great score as to earn one with your own riding. He was also quick to add, "Courtney is a hell of a rider. She deserves all the credit."

Third-place finisher, Leslie Morse of Beverly Hills, CA, took huge risks with a very high degree of difficulty in her freestyle. Riding her Swedish stallion, Tip Top 962, Morse had noticeable troubles in many spots, but it was an exciting ride to very jazzy music, as described by Ground Jury President Cara Whitham of Canada. "...An absolute pleasure," said Whitham, who addressed Morse at the press conference by saying, "Hat's off to you." This will be the fourth World Cup for Morse, who has represented the U.S. twice on Kingston and now for a second consecutive time on Tip Top 962.

Whitham continued to say that the judges were very happy with the improvement in all the rides compared to Saturday. U.S. Chef d'Equipe Klaus Balkenhol was in complete agreement. "Our riders' performances were much improved. Only good performances get good scores." He explained it is the job of every rider to give judges a chance to give good scores. He went on to say he is not at all concerned

with two of the horses being 17 years old, noting that many Olympic winners have been 16 or 17. "These are experienced horses and riders," he said. He feels that with the preparation and training the next few weeks will bring, U.S. riders will be confident when they show up in Las Vegas.

Of the three remaining competitors, Florida's Arlene (Tuny) Page took the fourth-place spot with some inconsistencies. Her mount, Wild One, was the youngest at age 11 and looks to have a bright future. New Jersey's Michael Barisone chose to debut a completely new freestyle aboard Jane Suwalsky's Neruda. There was no shortness of excitement, but there is work to be done on transitions. Small bobbles seemed to plague their test. This was most likely the final competition for Jennifer Smith's mount named Parocco ridden by Jeremy Steinberg. Steinberg rode a steady test, but said the also 17-year-old gelding may retire when returned home to Washington.

Peter's repeated his comment from yesterday that it was not quite the same without friend and fellow competitor, Guenter Seidel, who had to withdraw after his horse, Aragon (owned by Dick and Jane Brown), came up lame in the warm-up following a jog earlier in the week. Donna Richardson was also forced to withdraw today when her Jazzman developed a temperature.

Peters, King and Morse will spend the next few weeks working with Balkenhol in California in preparation for the Rolex FEI World Cup Dressage Finals. They will ship together to Las Vegas on April 16. They will be joined there by Catherine Haddad who was granted a fourth spot on the U.S. team by the International Equestrian Federation (FEI) based on scores earned in Europe. She and her horse will travel from Europe on the charter flight with the other European competitors.

Four American riders at the World Cup held in America – we've come a long way. Leslie Morse summed it up when she said, "This is kind of fun!"

World Cup Dressage Tickets for Sale!!

Great balcony seats—Asking \$125/ticket.
3 tickets available. This is a great deal!

- Balcony seats on website going for \$185.
- Show jumping ticket also available.
- Please call Kathryn at 314-578-7267

Wolfgang Scherzer Dressage Clinics

At



Wolfgang resides and trains in Birmingham, AL but was born, raised and received his certification in Germany. He trained and rode under the tutelage of many great trainers before coming to the US over twenty years ago. Wolfgang has trained multiple horses to FEI levels including Grand Prix. He and his wife Holly now ride and train in the Southeast primarily. They both train with Conrad Schumacher annually (mainly on a clinic basis.)

Wolfgang is a fun, positive trainer who works well with all levels of riders and horses. He is patient with a beginner and yet can really help advanced rider/horse combinations too. His training is non-controversial and he will also ride a horse, if asked. He won't push you beyond your comfort zone, but you will find yourself taking away something to work on for next time. More than anything - he is fun and a good teacher.

Wolfgang does a great job with younger horses, schoolmasters and also has helped many of us get ready for shows. He has been coming for several years now to Hamilton Stables and his regular riders are doing really well at local shows and at regional championships.

Rides are \$125 for 45 minute sessions and limited stabling is available. Auditors are welcome at \$15 per day. Hamilton Stables, LLC is located at 3955 Hoffman Rd, Wentzville, MO 63385

2007 Clinic Dates

April 28-29

May 26-27

June 23-24

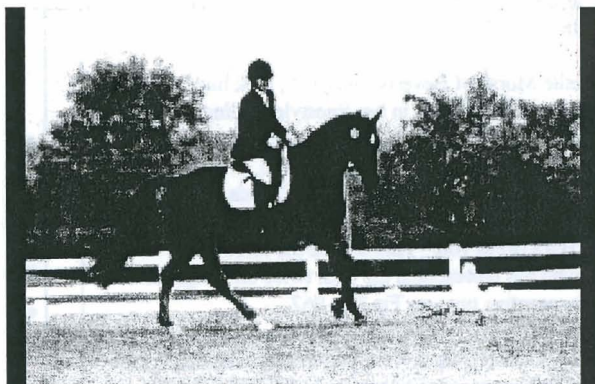
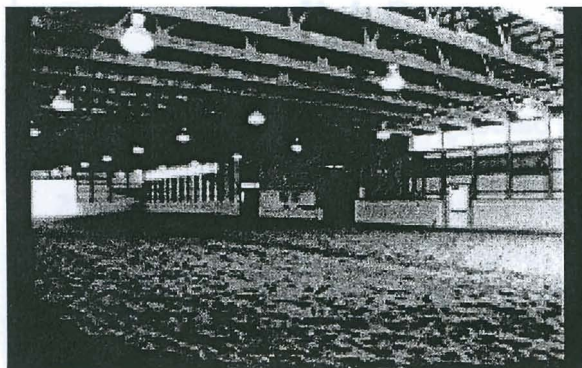
July 28-29

Sept 1-2

Oct 6-7

Nov 10-11

Please contact Julie Snitzer at 314.704.7441 for more information



St. Louis Area Dressage Society (SLADS) 2007 Membership Form

SLADS is a USDF Charter Group Member organization

Members are automatically USDF Group Members

Membership Categories **New** (please include a short bio for the newsletter) **Renewal**
 Individual (\$47) **Family** (\$64) **Jr/Young Rider** (\$37) (All members receive SLADS newsletter)

Other organizations I belong to: USEF USDF (Participating Member) USEA MHSA.

General Information

Name: _____
 This will be the "Primary" if Family Membership
 Address: _____
 Address: _____
 City/State/Zip _____
 Phone(s): _____ (primary) _____ (alternate)
 Birth Date _____ USDF No. _____
 E-mail address: _____
 Horse's Name/Breed: _____

I keep my horse(s) at: Home / Board at _____

Family Membership Information (Two included for SLADS family memberships) - Added names are \$17 each

Family member is defined as members in an immediate family who either live at the same address or who have the same legal address.

Name	USDF No	Birth Date

Jr/Young Rider = Under 21 yrs. Adult = 21yrs through 38yrs Jack Benny = Over 39yrs & Under 50yrs George Burns = Over 50yrs

Year End Award Nominations: Rider Awards (FREE for EACH Riding Members): (Select the appropriate age group)
 (Every rider in a membership is entitled to a free nomination!)

				Rider Name / Birth date
<input type="checkbox"/> Jr/Young Rider	<input type="checkbox"/> Adult	<input type="checkbox"/> Jack Benny	<input type="checkbox"/> George Burns	_____
<input type="checkbox"/> Jr/Young Rider	<input type="checkbox"/> Adult	<input type="checkbox"/> Jack Benny	<input type="checkbox"/> George Burns	_____
<input type="checkbox"/> Jr/Young Rider	<input type="checkbox"/> Adult	<input type="checkbox"/> Jack Benny	<input type="checkbox"/> George Burns	_____

Year End HORSE Award Nominations: Horse Awards (\$5 each): (Select either or both per horse) **Horse Name**

<input type="checkbox"/> Dressage	<input type="checkbox"/> Eventing	_____
<input type="checkbox"/> Dressage	<input type="checkbox"/> Eventing	_____
<input type="checkbox"/> Dressage	<input type="checkbox"/> Eventing	_____

Membership fees: \$ _____

Nomination fees: \$ _____

Total Enclosed: \$ _____



Get Involved... WE NEED YOU! Please volunteer to support our shows

Make checks payable to: SLADS Mail fees & form to:

Dawn White, 6009 Wild Wood Ct, High Ridge, MO 63049 (horseridermom@sbcglobal.net)

St. Louis Area Dressage Society

ST. LOUIS AREA DRESSAGE SOCIETY

Forwarding & Address Correction Requested

Colleen Murphy
748 Sydney Court, #104
Washington, MO 63090

