



HOOFPRINTS

The St. Louis Area Dressage Society Newsletter



June, 2011

SLADS is a USDF Group Member Organization (GMO) and SLADS members are automatically USDF Group Members (GMs). For USDF Participating Membership, members must apply directly to USDF.

President's Letter

Hi,

Wow, what a busy time. School is ending; summer plans and vacations are upon us. I know the show committee is busy getting ready for the June show. It looks like it will be a good size show with around 80 horses. If you have not yet signed up to volunteer, please contact Sarah at seszachnieski@gmail.com.

During this busy time we need to take time to reflect on life and enjoy each other's company. Sometimes we get so busy that we forget to spend time with our love ones or do something special for them. I look forward to seeing everyone at the show and spending some quality time with my friends.

See you there,

Ann

HAPPY JUNE BIRTHDAY SLADS MEMBERS!

Reba Bryson

Christy DeMauro

Diann Dixon

Julie Flynn

Audra Harrold

Kimberly McIntosh

Chris Ochoa

Debbie Price

Sarah Szachnieski





IDEAL HORSE PROPERTY NEAR WARRENTON, MO -

Over 10 hilltop acres, just 10 minutes from downtown Warrenton. Custom-built home with 3 bedrooms, 2 full baths, WOW! kitchen with granite countertops and travertine backsplash, wood floors throughout, updated baths, large deck, large 5-foot chain link dog pen off walk-out lower level. Custom-built 3-stall barn with overhang and runs off each stall, heated tack/laundry room/wash rack with hot and cold water, USDF standard dressage arena (80'x200') with limestone and sand footing, storage for 500 hay bales, could add 4th stall. Call for a tour today! Or view many photos online at website listed below and type in MLS # 11021508.

Prudential Alliance, REALTORS
 314-872-6626, 314-852-9223

View this listing and additional photos at:
www.LouiseShapleigh.com

With closed transactions ranging from
 \$5.4 million to \$70,750...

*"No deal is too big or too small -
 It'll be a breeze with Louise!"*

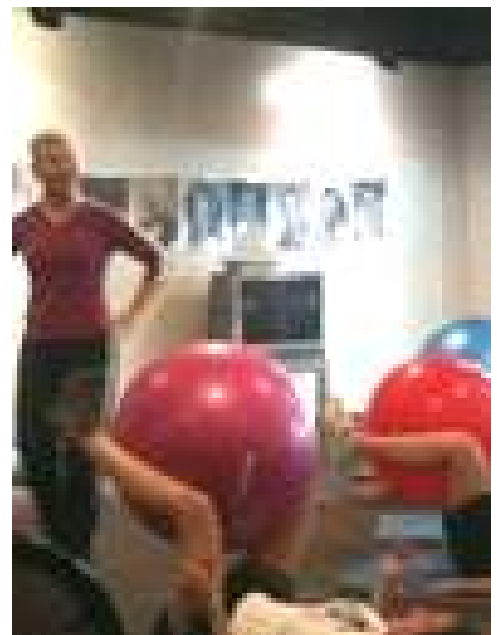
Congratulations to
 Jennifer Murphy-Buck
 on winning the open
 position on the SLADS
 Board of Directors!

[SLADS Equi-Center Clinic](#)

"If you didn't make it to the Equi-Center Clinic, you missed a great educational opportunity. Liz Drew did a terrific job in both torturing and teaching us the rudiments of balance and strength in riding. She went above and beyond to have a clinic where people actually participated and learned. What is so special about the exercises Liz teaches is that they relate directly to equestrian sports. I was at the first two sessions and I believe everyone walked away with a better understanding of how our bodies need to work in order to ride in concert with our horses. People may have been hot, tired, and sore but they were all positive in their comments."

Debbie Price

To Liz Drew: Thank you for spending a beautiful Saturday teaching us in your Equi-Center Clinic. I didn't take many notes about the muscles we were working. It turns out I didn't need notes: When I rolled over in bed the next morning, I could feel every single one! The title of this picture, by the way, is "Who knew we could use a fitness ball to practice our half halts?" Lisa Hollenbeck



Many enjoyed the SLADS Clinic at Hamilton Stables



April 9, 2011

First of Three SLADS

2011 Schooling Shows a Success

"On Saturday, April 30th SLADS hosted a schooling show at the NEC. Eight riders from Lake Saint Louis Stables attended and we had a great time! The show was organized, ran on time, the judging was excellent and the casual atmosphere was perfect for our "first timers" and the more seasoned riders had the opportunity to run through the new tests without spending a fortune." **Debbie Hubbard**

SLADS 2011 SCHOOLING SHOW SCHEDULE

All shows will be held at the
National Equestrian Center

Sunday, August 14th (tentative)
Saturday, October 29th

See www.slads.org for prize list
and entry form.

e-TRAK – USDF’s Newest Member Benefit!

By Linda Schultz, USDF Director of Marketing

In addition to the award-winning *USDF Connection* magazine, GMO members can access e-TRAK online. e-TRAK is a brand new searchable database of dressage and horse related materials available to all current USDF members.

Materials include articles from *USDF Connection*, video clips from various USDF programs and USDF partners, audio interviews with Roemer Foundation/USDF Hall of Fame inductees and articles in PDF format from other partners and sponsors, including the American Association of Equine Practitioners. This great educational resource is included with any current USDF membership, including Group Membership!

Simply go to the USDF Web site and click the log-in button in the upper right corner. Enter your login and password information. Once you are logged in, click the Home button in the upper left side in the green bar – then click the e-TRAK banner on the home page. If you have not already done so, you will need to establish a login.

F. E. I. TRAINER LIZ DREW

SAFE HORSES AVAILABLE FOR LESSONS AT ALL LEVELS

BRAND NEW RIDER FITNESS PROGRAM & GYM ON SITE

PRIVATE LESSONS FOR ALL AGES

CASUAL RIDERS WELCOME

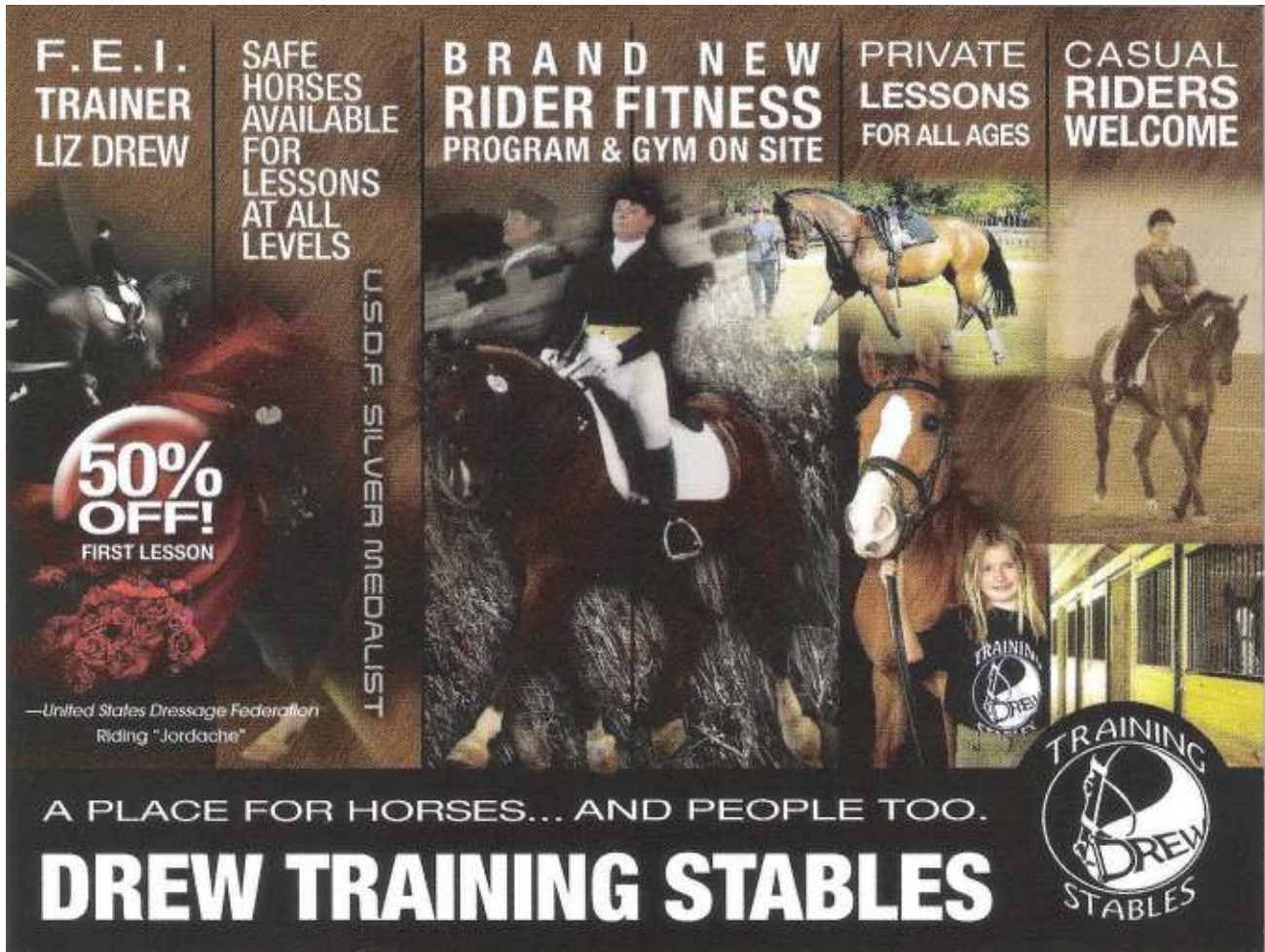
50% OFF! FIRST LESSON

—United States Dressage Federation
Riding "Jordache"

U.S.D.F. SILVER MEDALIST

A PLACE FOR HORSES... AND PEOPLE TOO.

DREW TRAINING STABLES



For Sale



For Sale: Lovely coming 5 yr old Dutch March, Ballerina, by Prestige out of an imported Star/Prok Flemming mare. Very well bred and solidly schooling through 2nd level. 3 big/swinging gaits with an especially good canter. Lovely temperament and willing attitude. Really wants to please her people! Asking \$25,000 Owner/Breeder is motivated to reduce numbers-reasonable offers considered. Contact trainer Melissa Allen melissahervert@hotmail.com 913 669 4779 or Owner Amy Stuhr 913 636 0863 astuhr@nbofkc.com

The next General Meeting will be held
Monday, July 11, 2011 at 7:00 pm
at the National Equestrian Center
6880 Lake St. Louis Blvd
Lake St. Louis, MO 63367

NO MEETING IN JUNE!!!

To have an article, ad, or event included in HoofPrints, please email the item to Kate Walter at walterll@aol.com.

2011 Calendar of Events

June 11: Al Khamsa June Dressage Show, Tower Hills Equestrian Center, Dawson, IL. Alice Martin at www.centerlinedressage.com.

June 11: Queeny Park Horse Trials, Queeny Park, St Louis, MO. Libby Abbott at 636-225-3977 or www.qpee.org.

June 17-19: SLADS Summer Festival I and II, NEC, Lake St. Louis, MO. Sandi Lewis at sandy.marnie@att.net.

June 18: CLD Chevaux Schooling Show. Chrisman, IL.. Merri Voight.

July 2: CLD FireCracker Schooling Show, StarWest Stables, New Berlin, IL. Jan Gurga.

July 14-17: Dressage Camp at Amity Farms with Katie Minter Dykehouse. Fulton, MO. Contact Sarah Patrick at 573-590-1703. See camp flyer on SLADS website for details. Sponsored by CDCTA.

July 30: Show-Me State Games & USDF Region 4 Team Competition Dressage Show at Fox Run Farm in Columbia, MO. Stacey Bates at 573-694-2648 or summitvet08@yahoo.com.

August 6: Brier Bank Farm Schooling Show, Marine, IL. David Anderson at 618-531-5208 or David@brierbankfarm.com or www.brierbankfarm.com.

August 6: Dressage Schooling Show, Tower Hill Equestrian Center, Dawson, IL. Teri Moranz.

August 14: SLADS Schooling Show, NEC, Lake St. Louis, MO. Contact Kate Walter at walterlll@aol.com. See prize list in newsletter and on www.slads.org.

August 27-28: The Kirkwood Show, NEC, Lake St. Louis, MO. Sandy Venneman at vennemansandy@gmail.com.

August 27-28: Centerline Dressage Classic I and II, Illinois State Fairgrounds, Springfield, IL. Jeanne Craven at mowanda@aol.com or www.centerlinedressage.com.

September 9-11: Region 4 Regional Dressage Championships, MidWest Championships, and West Central Sporthorse Finals. North Iowa Fairgrounds in Mason City, Iowa.

September 17: Al Khamsa Fall Dressage Show, Tower Hills Equestrian Center Dawson, IL. Alice Martin at 217-546-9400.

September 24: AAALSHA Open Dressage Show, NEC, Lake St Louis, MO. Nancy Nathanson at 805-448-3027 or www.andalusian-lustano-alliance.com. This show is open to all breeds.

October 8-9: SLADS Fall Festival, NEC, Lake St. Louis, MO. Sandi Lewis at sandy.marnie@att.net.

October 29: SLADS Schooling Show, NEC, Lake St. Louis, MO. Contact Kate Walter at walterlll@aol.com. See prize list in newsletter and on www.slads.org.

November 5-6: 2011 USDF Region 4 Adult Clinic featuring Lilo Fore. Palmyra, Nebraska. Cost for rider participants is \$250 for a 30-45 minute private session. Auditing is available for pre-registered USDF members at \$40/day or \$70 for both day else \$50/day or \$90 for both days. For more information, go to www.usdf.org/education/clinics/adult/index.asp or email Lisa Van Stratten at lisavanstratten@yahoo.com.



St. Louis Area Dressage Society (SLADS) 2011 Membership Form

Date of Application: _____

SLADS is a USDF Group Member Organization (GMO) and SLADS members are automatically USDF Group Members (GMs). For USDF Participating Membership, members must apply directly to USDF.

Membership Categories: New (please include a short bio for the newsletter) Renewal

Membership Type: Individual (\$47) Family (\$64) Jr/Young Rider (\$37)

General Information

Name: _____ This will be the "Primary" for Family Membership.

Address: _____

City/State/Zip: _____ E-Mail: _____

Phone(s): _____ (home) _____ (cell) USDF No: _____

Birth Date: ____ / ____ / ____ * Rider Category: _____ (enter one: Silver/Gold/Platinum/Professional)

* 4 Rider Categories: Silver = Ages 21 & Under Gold = Ages 22 to 39 Platinum = Ages 40 & Up Professional

Horse(s) Name/Breed: _____

I keep my horse(s) at: Home / Board at _____

Family Membership Information

Two per SLADS family membership (i.e. primary + 1). Added names are \$17 each.

Name	USDF No	Birth Date	Rider Category

Family member = members in an immediate family who either live at the same address or have the same legal address.

Please choose how you would like to receive your SLADS newsletter: E-mail Paper/U.S. Mail
(one newsletter per Membership Type)

May we include you in the annual Buzz Book: Yes No Total Enclosed: \$ _____
(the Buzz Book is mailed only to SLADS members)

Make checks payable to: SLADS Questions: walterlll@aol.com Website: www.slads.org

Mail fees & form to: Kate Walter, 4608 McPherson Ave, St. Louis, MO 63108

All current members of SLADS and their horse(s) listed on this form are **eligible** for SLADS year end awards. Additional horses may be added at any time during the competition year, but scores from past shows will not count towards SLADS year end awards. Scores from any remaining SLADS recognized shows will count towards the SLADS year end awards.

For office use only.
Date Received: _____
Check #: _____
Date Sent to Treasurer: _____

*Get Involved... WE NEED YOU! Please volunteer to support our shows
and to be eligible for SLADS year end awards.*

PAID ADVERTISEMENT



FANTASTIC COUNTRY ESTATE on 112 Acres -

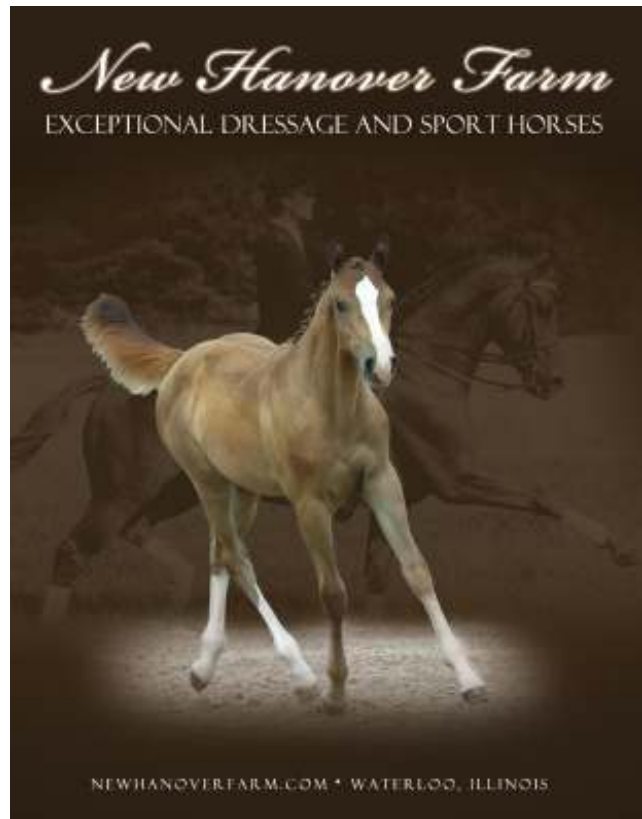
Unbelievable views, peace, quiet, beauty. Fabulous 4 BR/4.5 ba, 1.5-sty, updated home, vaulted main floor MBR suite, huge walk-in, cherry cabinetry in bath, Jacuzzi; vaulted great room, fir-to-clg stone, gas fpkc, wall of (Andersen) windows, Trex wrap deck; open floor plan, newer wood flooring, walk-out lower level - mostly finished; restored barn with IDEAL party rm on 2nd floor, stalls, storage; 3-bay heated/AC machine shop/garage; PVC fencing, rolling pasture acreage, approx. 25% wooded. Just 15 mins. to I-44/ town/shopping in Sullivan, MO. Smaller acreage available. Call for a tour today! Or view many photos online at website listed below and type in MLS # 90029855.

Prudential Alliance, REALTORS
314-872-6626, 314-852-9223

View this listing and additional photos at:
www.LouiseShapleigh.com

With closed transactions ranging from
\$5.4 million to \$70,750...

*"No deal is too big or too small -
It'll be a breeze with Louise!"*



Barbara Wood 314-603-2229

Trish Dalton, Co-Editor
Kate Walter, Co-Editor
1611 Highway W
Foristell, MO 63348

